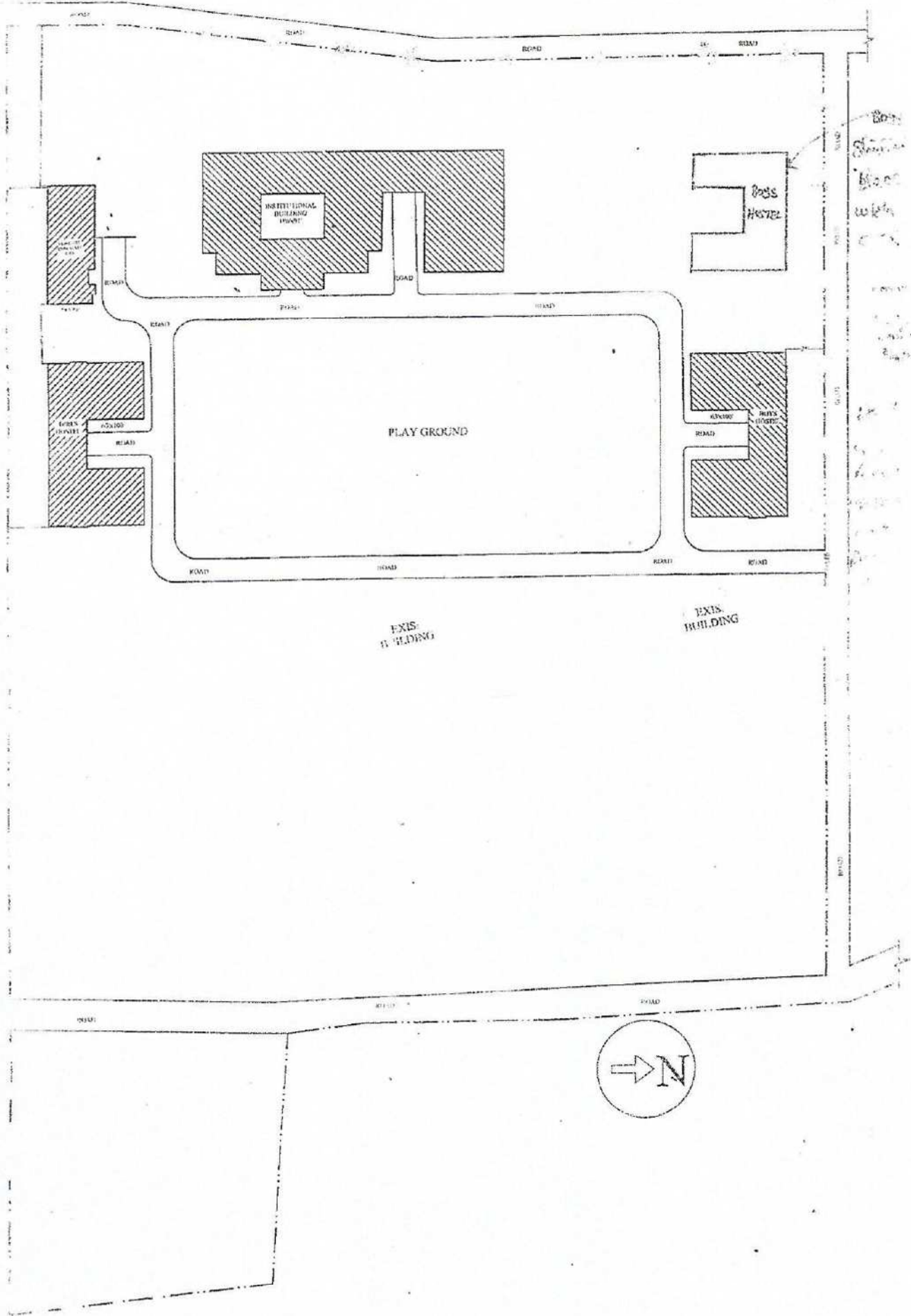


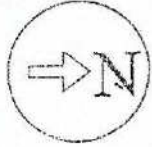
**BUILDING**

**PLAN**

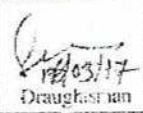
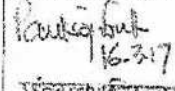
# GOVT. COLLEGE OF TEACHER EDUCATION (CTE) SAMASTIPUR



*Handwritten notes on the right side of the plan:*  
 1. 20m  
 2. 10m  
 3. 10m  
 4. 10m  
 5. 10m  
 6. 10m  
 7. 10m  
 8. 10m  
 9. 10m  
 10. 10m  
 11. 10m  
 12. 10m  
 13. 10m  
 14. 10m  
 15. 10m  
 16. 10m  
 17. 10m  
 18. 10m  
 19. 10m  
 20. 10m  
 21. 10m  
 22. 10m  
 23. 10m  
 24. 10m  
 25. 10m  
 26. 10m  
 27. 10m  
 28. 10m  
 29. 10m  
 30. 10m  
 31. 10m  
 32. 10m  
 33. 10m  
 34. 10m  
 35. 10m  
 36. 10m  
 37. 10m  
 38. 10m  
 39. 10m  
 40. 10m  
 41. 10m  
 42. 10m  
 43. 10m  
 44. 10m  
 45. 10m  
 46. 10m  
 47. 10m  
 48. 10m  
 49. 10m  
 50. 10m  
 51. 10m  
 52. 10m  
 53. 10m  
 54. 10m  
 55. 10m  
 56. 10m  
 57. 10m  
 58. 10m  
 59. 10m  
 60. 10m  
 61. 10m  
 62. 10m  
 63. 10m  
 64. 10m  
 65. 10m  
 66. 10m  
 67. 10m  
 68. 10m  
 69. 10m  
 70. 10m  
 71. 10m  
 72. 10m  
 73. 10m  
 74. 10m  
 75. 10m  
 76. 10m  
 77. 10m  
 78. 10m  
 79. 10m  
 80. 10m  
 81. 10m  
 82. 10m  
 83. 10m  
 84. 10m  
 85. 10m  
 86. 10m  
 87. 10m  
 88. 10m  
 89. 10m  
 90. 10m  
 91. 10m  
 92. 10m  
 93. 10m  
 94. 10m  
 95. 10m  
 96. 10m  
 97. 10m  
 98. 10m  
 99. 10m  
 100. 10m



*Revised on 6-3-17*

REVISIONED SITE PLAN OF CTE SAMASTIPUR	Sheet Title: Site Plan	Date:- 06.03.2017	 Draughtsman	Architect  16-3-17 Search (Signature)	Bihar State Education Infrastructure Development Corporation Ltd. Patna
		Area:-			

## अध्यापक शिक्षा महाविद्यालय



### Provisions provided in CTE

CTE is a two floor building of area 2868.04sqm (1434.02sqm each).

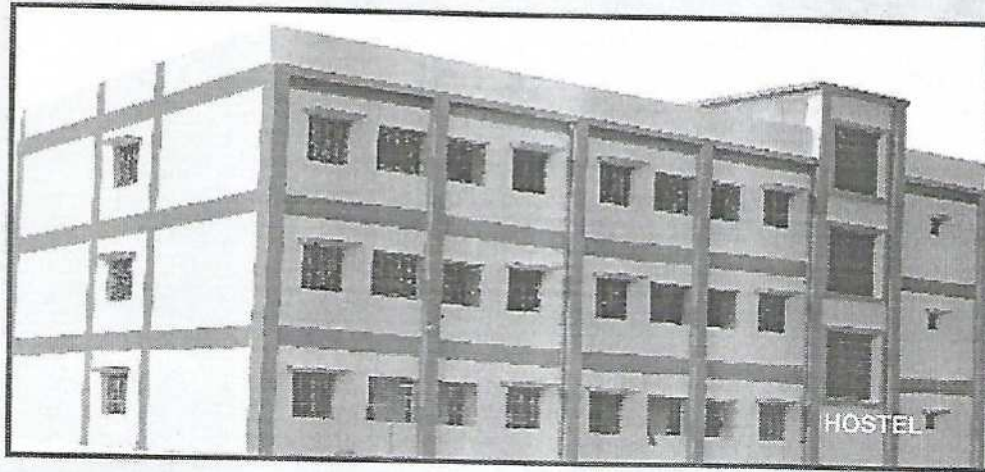
The Ground Floor comprises of

- 2 class rooms each of size 10.0m x 5.5 m
- Principal's Room of size 8.5m x 5m
- Vice principal's Room of size 8.6m x 6.2m
- So. Science. lab of size 5m x 5.5m
- Room for art education of size 5m x 5.5m.
- Room for Phy. Education of size 8.6m x 5.2m.
- Staff Room of 6.8m x 6.2m
- Admin office of size 8.6m x 6.0m
- Attached toilets with principal
- Store room for 8.6m x 4.2m
- A multipurpose hall of size 15.2m x 15.5m
- Drinking water facility, toilets for boys and girls, staircases are provided as per norms.

The First Floor comprises of

- 2 class rooms each of size 10.0m x 5.5 m
- Science lab of size 8.6m x 6.2m
- Computer lab of size 8.6m x 6.0m
- Psychology lab of size 7.8m x 5.2m.
- Library of size 8.5m x 11.4m.
- Maths lab of size 8.6m x 5.2m.
- Girls common room of size 5.0m x 5.5m with attached toilet of size 1.2m x 2.5m
- Store of size 5.0mx 5.5m.
- Drinking water facility, toilets for boys and girls, staircases are provided as per norms.

A large central courtyard of size 12.6m x 9.1 m has been provided

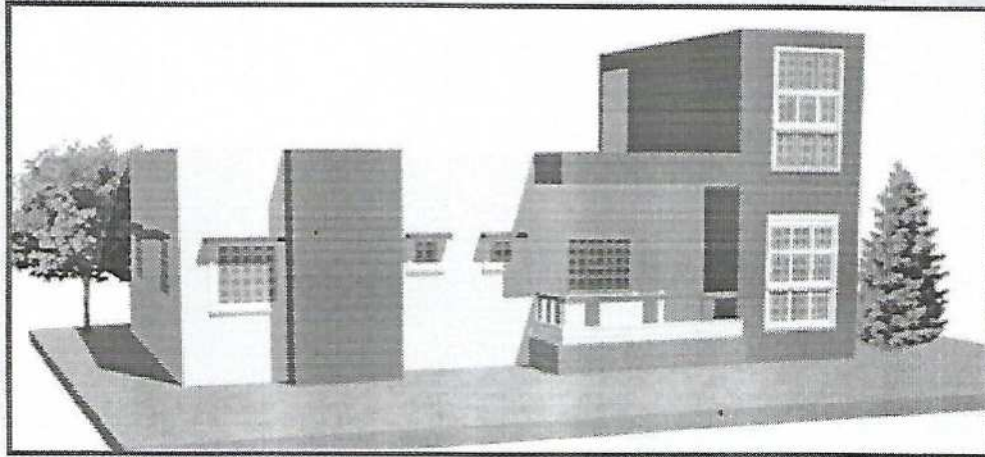


### NEW HOSTEL BUILDING

New Hostel Building (Girls as well as Boys) designed for 100 students is a 3 storied building having a total area of 1494 sqm. (16075.44sft). The building has an access through 2 staircases which lead up to the terrace. The ground floor of the building has an access through a ramp as well to facilitate the physically challenged. Bath and WC is located on all the 3 floors according to the norms. The ceiling of each floor is 3m. A 2.7 m wide passage facilitates the easy movement in the corridor.

The Ground floor having an area of 498 sqm (5358.48 sft) incorporates 8 rooms, each of size 4.2m x 2.7m which can accommodate 2 students with bed as well as a study area. A dining hall (10.7m x 5.4m) for 100 students with store (4.2m x 2.7m) and kitchen (6.4m x 2.7m) is in the ground floor of the building. A common room (15.6m x 4.2m), hostel store (4.2m x 2.7m), guard room (4.2m x 2.5m) and an office cum sick room (5.5m x 4.2m) is present in the ground floor of the building.

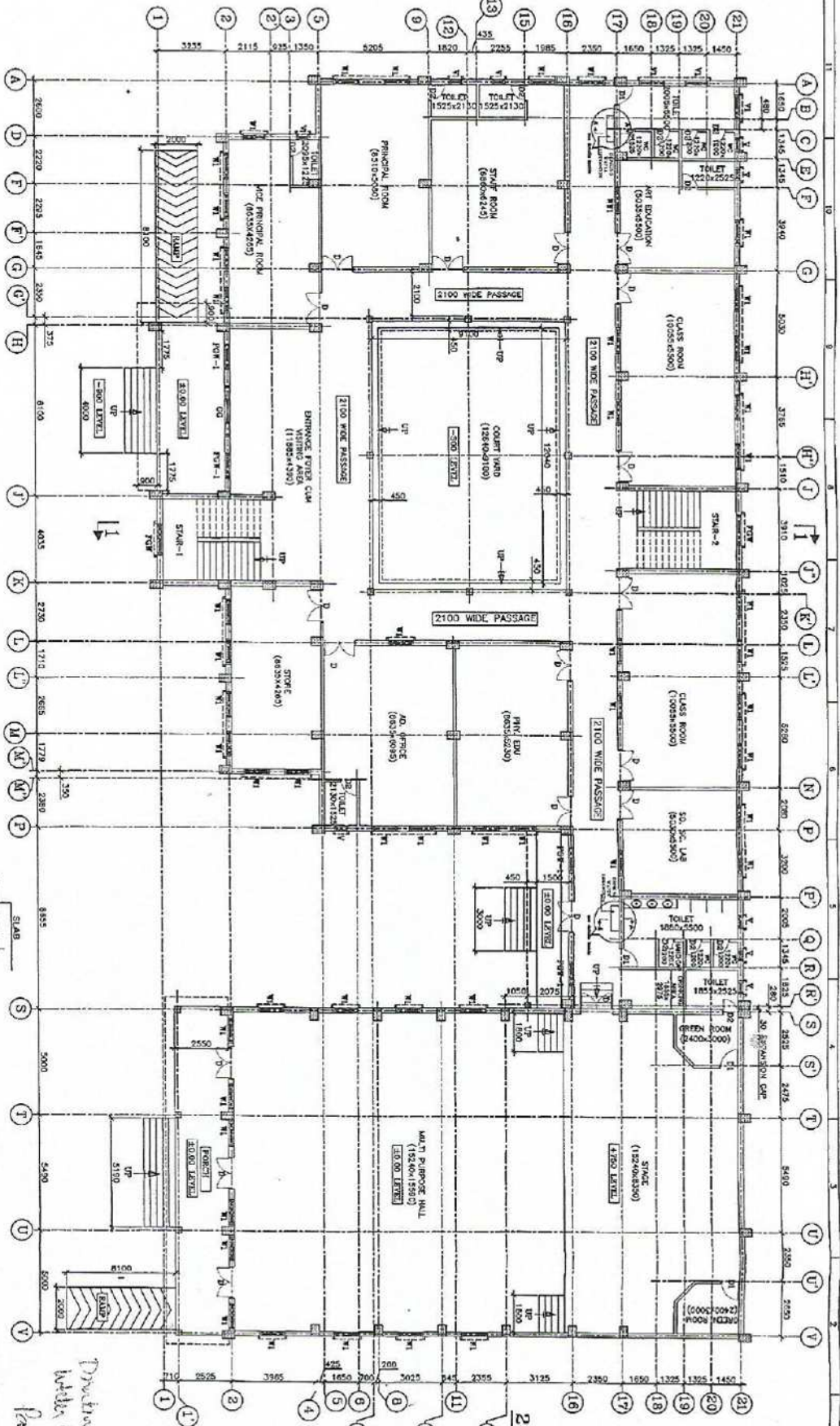
The first and second floor of the building, each has 22 rooms each of size 4.2m x 2.5m which can accommodate 2 students with bed as well as a study area.



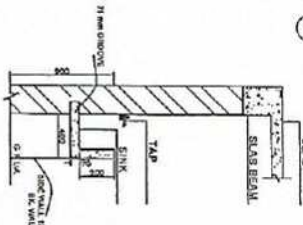
## PRINCIPAL'S QUARTER

The principal's quarter consists of 2 bedrooms. ( 3.3m x 4.2m and 3.3m x 4.1m) ,a guest room ( 3.8m x 3.3m), drawing room ( 3.5m x 4.2m), dining room ( 3.0m x 4.2m), kitchen ( 2.1m x 3.0m), 2 toilets ( 1.5m x 2.1m) a staircase, a balcony (3.0m x 1.2m) and a 1.2m wide verandah. The total area of principal's house is 123.53sqm (329.19 sqft)

SCHEDULE OF DOORS & WINDOWS G-F					
SL.NO	TYPE	WIDTH	HEIGHT	NO. OF	DESCRIPTION
1	D	1800	2400	17	DOUBLE PANEL WOODEN DOOR
2	D1	900	2400	4	SINGLE PANEL WOODEN DOOR
3	D2	760	2400	13	SINGLE PANEL WOODEN DOOR
4	W1	1500	1800	48	STEEL FRAME GLAZED WINDOW
5	V	600	600	9	STEEL GLAZED VENTILATION
6	V1	1200	600	3	STEEL GLAZED VENTILATION
7	FW1	1500	1800	2	STEEL FRAME GLAZED WINDOW
8	FW2	1500	1500	4	STEEL FRAME GLAZED WINDOW
9	CG	2400	2400	1	COLUPTABLE GATE



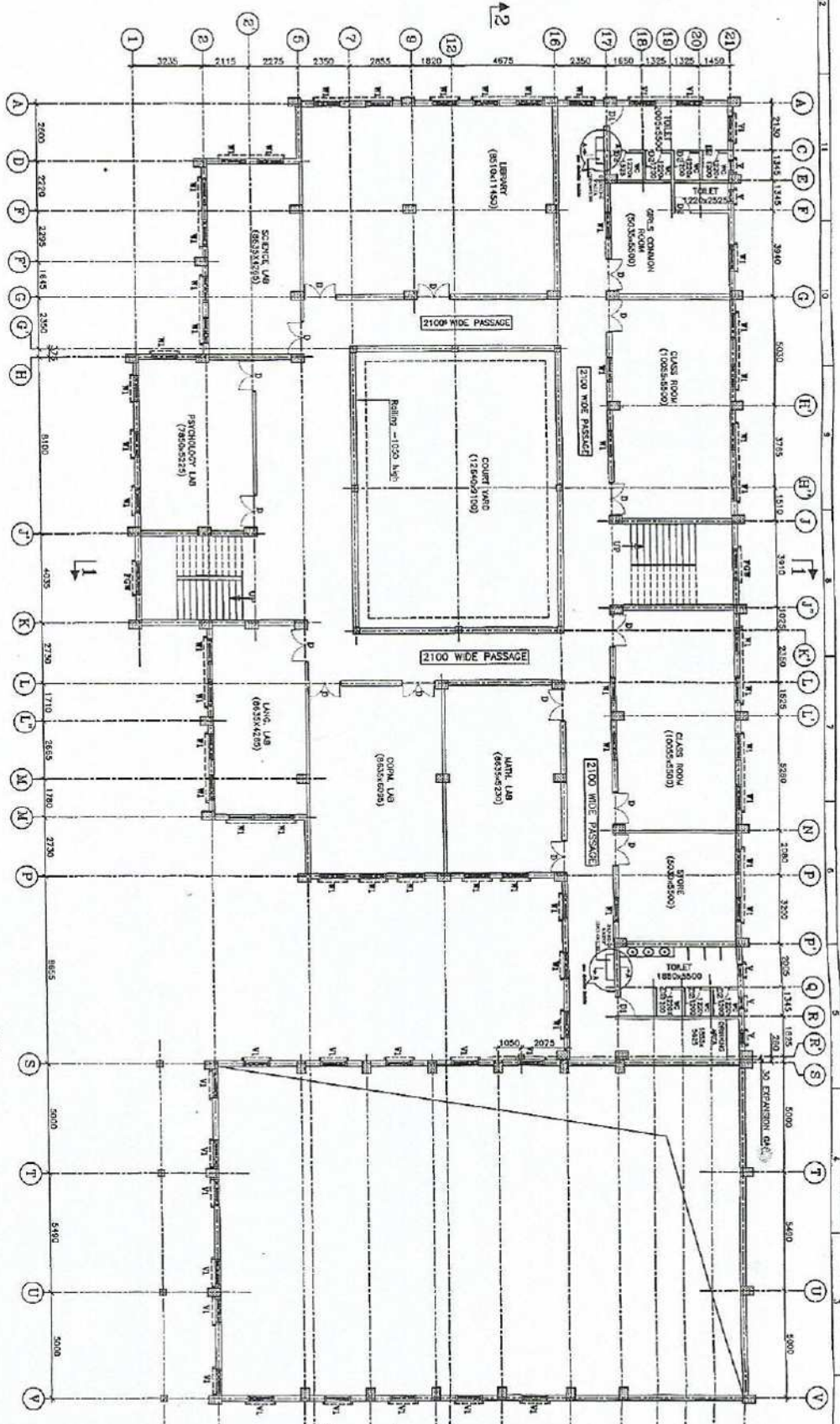
GROUND FLOOR PLAN  
AREA - 1434.02 sqm (15430.06 sqft.)  
(SCALE 1:100)



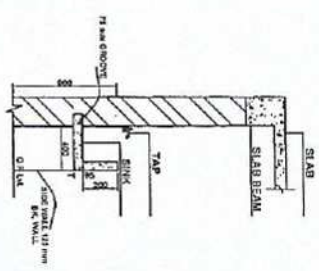
- NOTES:-
1. ALL DIMENSIONS AND LEVELS ARE IN mm. & FIGURED DIMENSIONS SHALL BE FOLLOWED.
  2. +0.00 LEVEL CORRESPONDS TO FINISH LEVEL (P.L.) OF BUILDING, WHICH IS 900mm ABOVE ABSOLUTE GROUND LEVEL (G.L.).
  3. ALL RCC WORK SHALL BE OF M25 GRADE CONCRETE.
  4. BRICKWORK SHALL BE WITH 100A BRICKS IN CEMENT MORTAR 1:6.

<p><b>PROJECT</b> PROPOSED INSTITUTIONAL BUILDING OR CTR</p>		<p><b>ARCH.</b> BRENDC. PATNA</p>		<p><b>C.ONS.(TECH.)</b> BRENDC. PATNA</p>	
<p><b>DEPT.</b> BIHAR STATE EDUCATIONAL INFRASTRUCTURE DEVELOPMENT CORPORATION LTD.</p>		<p><b>ARCHIT. AND CONSULTANT</b> RICKS CONSULTANTS</p>		<p><b>ARCHIT. AND CONSULTANT</b> RICKS CONSULTANTS</p>	
<p><b>CLIENT</b> BIHAR STATE EDUCATIONAL INFRASTRUCTURE DEVELOPMENT CORPORATION LTD.</p>		<p><b>CLIENT</b> BIHAR STATE EDUCATIONAL INFRASTRUCTURE DEVELOPMENT CORPORATION LTD.</p>		<p><b>CLIENT</b> BIHAR STATE EDUCATIONAL INFRASTRUCTURE DEVELOPMENT CORPORATION LTD.</p>	
<p><b>SCALE</b> AS SHOWN</p>		<p><b>SCALE</b> AS SHOWN</p>		<p><b>SCALE</b> AS SHOWN</p>	
<p><b>DATE</b> BY</p>		<p><b>DATE</b> BY</p>		<p><b>DATE</b> BY</p>	

GROUND FLOOR PLAN



AREA - 1434.02 sqm (15430.06 sqft.)  
**FIRST FLOOR PLAN**  
 (SCALE 1:100)



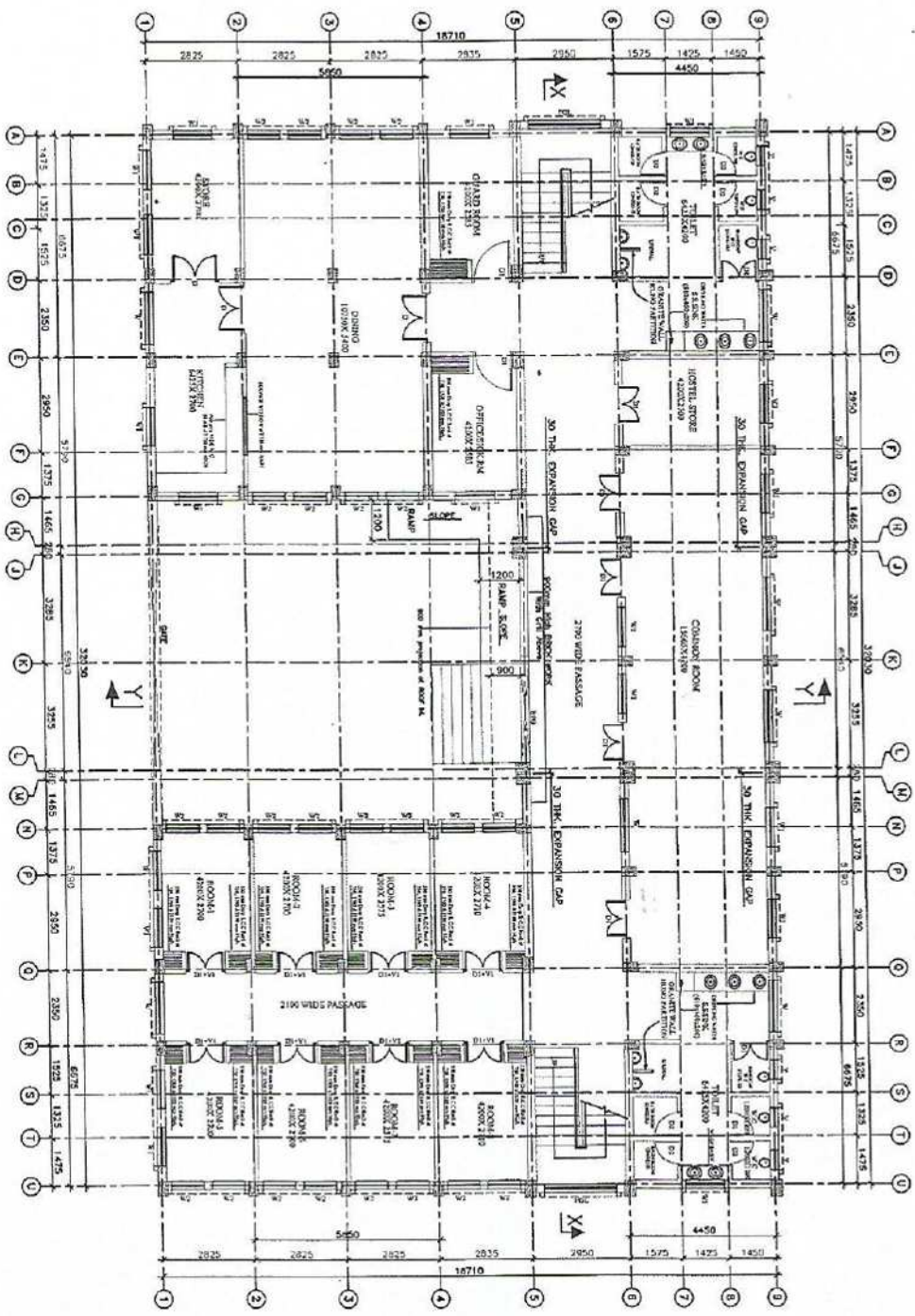
**SCHEDULE OF DOORS & WINDOWS F.F**

SLNO	TYPE	WIDTH	HEIGHT	NO.	DESCRIPTION
1	D	1500	2100	14	DOORWAY PAINT WOODEN DOOR
2	W1	900	2100	2	SHAKE FRAME WOODEN WINDOW
3	W2	750	2100	8	SHAKE FRAME WOODEN WINDOW
4	W3	900	1500	42	STEEL FRAME GLAZED WINDOW
5	W4	600	600	5	STEEL GLAZED VENTILATION
6	W5	1500	600	10	STEEL GLAZED VENTILATION
7	W6	1500	1800	2	STEEL FRAME GLAZED WINDOW

- NOTES:-**
1. ALL DIMENSIONS AND LEVELS ARE IN mm. & FIGURED DIMENSIONS SHALL BE FOLLOWED.
  2. 4000 LEVEL CORRESPONDS TO FINISH LEVEL (F.L.) OF BUILDING, WHICH IS 800mm ABOVE ABSOLUTE GROUND LEVEL (G.L.).
  3. ALL RCC WORK SHALL BE OF M25 GRADE CONCRETE.
  4. BRICKWORK SHALL BE WITH 100A BRICKS IN CEMENT MORTAR 1:6.

<p><b>BHAR STATE EDUCATIONAL INFRASTRUCTURE DEVELOPMENT CORPORATION LTD.</b>          SRINISHA BHAVAN, SAMBHRM, PATNA</p>		<p><b>ARCHT. &amp; CONSULTANT</b>          RANJAN BISHAI &amp; CONSULTANT SERVICES PVT. LTD.          80/80/202M, SOUTH OFFICE PARK, NEAR ST. XAVIER SCHOOL, DOP/PAWA, RANCHI-834002</p>	
<p><b>PROJECT</b>          PROPOSED INSTITUTIONAL BUILDING OF CTE</p>	<p><b>DEPT.</b>          BHAR STATE EDUCATIONAL INFRASTRUCTURE DEVELOPMENT CORPORATION LTD.</p>	<p><b>ARCHT.</b>          SRINISHA BHAVAN, SAMBHRM, PATNA</p>	<p><b>SENOR ARCHT.</b>          SRINISHA BHAVAN, SAMBHRM, PATNA</p>
<p><b>PROJECT AND CONSULTANT</b></p>		<p><b>C.CONS (TECH.)</b>          SRINISHA BHAVAN, SAMBHRM, PATNA</p>	
<p><b>DESIGN BY</b>          S.A.</p>	<p><b>DRAWN BY</b>          S.A.</p>	<p><b>SCALE</b>          AS SHOWN</p>	<p><b>DATE</b>          12.7.18</p>
<p><b>FIRST FLOOR PLAN</b></p>		<p><b>SHEET 2 OF 3</b></p>	

*Banking work part address  
 Pending work  
 12.7.18*



GROUND FLOOR PLAN  
 AREA = 6252 SQM (6539.46 SFT)  
 SCALE (1:25)

SCHEDULE OF DOORS & WINDOWS				
S.L. NO.	TYPE	WIDTH	HEIGHT	NO. & CREATION
1	D	1500	2100	1 DOUBLE ENTAIL WOODEN DOOR
2	CF	1200	2100	16 DOUBLE ENTAIL WOODEN DOOR
3	CO	750	2100	12 SINGLE ENTAIL WOODEN DOOR
4	W	1600	1500	7 STEEL FRAME GLAZED WINDOW
5	WV	1200	1200	15 STEEL FRAME GLAZED WINDOW
6	WV	1500	1500	24 STEEL FRAME GLAZED WINDOW
7	V	600	600	8 STEEL GLAZED VENTILATION
8	VV	1200	300	1 STEEL GLAZED VENTILATION
9	FW	2500	2100	2 GLAZED VENTILATION
10	SW	2500	2400	1 BR-FOOD GATE

*Marking with provision done*  
*Paula Gul*  
 11-7-12

REV	DESCRIPTION	DATE	BY

NOTES:-  
 1. ALL DIMENSIONS AND LEVELS ARE IN MM. & FIGURED DIMENSIONS SHALL BE FOLLOWED.  
 2. F.O.D LEVEL CORRESPONDS TO PLAIN LEVEL (P.L.) OF BUILDING, WHICH IS 1000MM ABOVE FINISHED GROUND LEVEL (F.G.L.).

3. ALL RCC WORK SHALL BE OF M25 GRADE CONCRETE.  
 4. BRICKWORK SHALL BE WITH 100A BRICKS IN CEMENT MORTAR 1:6.

ARCHT. AND CONSULTANT: **RMS** RANCHI DESIGN & CONSULTANCY SERVICES PVT. LTD.  
 SOUTH OFFICE P-90A, NEAR SIMLA MAIN SCHOOL, SIMLA HEAVEN, SHARDA, PUNJA

DEPT.: BIHAR STATE EDUCATIONAL INFRASTRUCTURE DEVELOPMENT CORPORATION LTD., SIKHARA BHAWAN, SHARDA, PUNJA

PROJECT: PROPOSED CONSTRUCTION OF NEW BOYS HOSTEL FOR 100 STUDENTS (OHTI/TEC/CE/BE/TS)

ARCHT. AND CONSULTANT: **RMS** RANCHI DESIGN & CONSULTANCY SERVICES PVT. LTD.  
 SOUTH OFFICE P-90A, NEAR SIMLA MAIN SCHOOL, SIMLA HEAVEN, SHARDA, PUNJA

DESIGN BY: S.A. *Paula Gul*  
 DRAWN BY: J.A. *Paula Gul*  
 CHECK & REVIEW: S.L. *Paula Gul*  
 DATE: 11-7-12

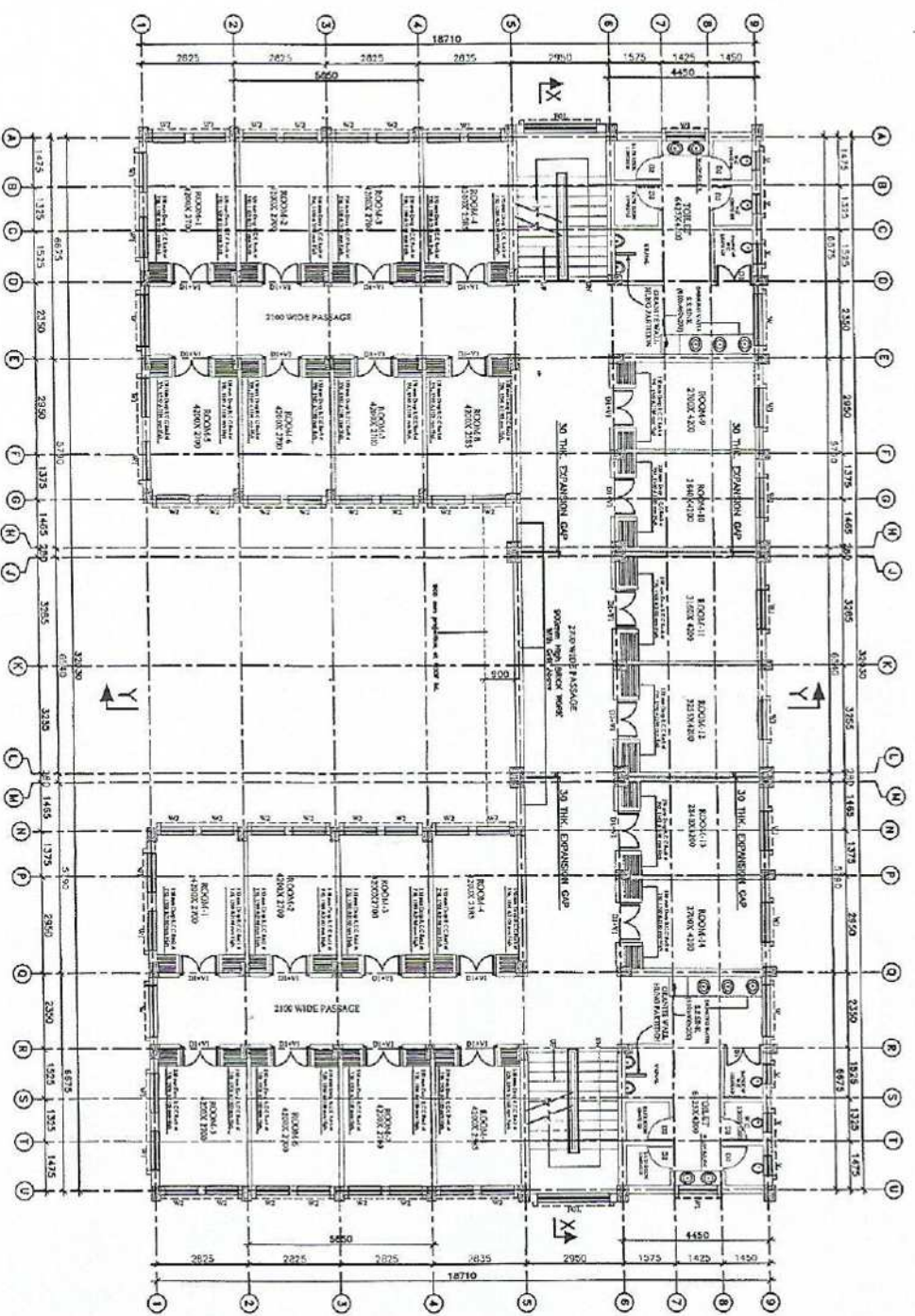
SCALE: 1/75

DOC. No.: drc/12/100/100/100/100/100

GROUND FLOOR PLAN

SHEET 1 OF 4





FIRST FLOOR PLAN  
 AS PER 1:100 SCALE (SEE SHEET 1:100)  
 (SCALE 1:100)

SCHEDULE OF DOORS & WINDOWS					
S. NO.	TYPE	WIDTH	HEIGHT NOS.	DESCRIPTION	
1	D1	1800	2100	22	DOUBLE PANEL WOODEN DOOR
2	D2	1500	2100	12	SINGLE PANEL WOODEN DOOR
3	W1	1500	1500	14	STEEL FRAME GLAZED WINDOW
4	W2	1500	1500	18	STEEL FRAME GLAZED WINDOW
5	W3	1500	1500	24	STEEL FRAME GLAZED WINDOW
6	V1	600	600	8	STEEL GLAZED VENTILATION
7	V2	1500	200	22	STEEL GLAZED VENTILATION
8	VAL	2500	2100	2	GLAZED VENTILATION

*Drinking water provision done  
 Painted walls  
 11-7-18*

**NOTES:-**

1. ALL DIMENSIONS AND LEVELS ARE IN MM. & FIGURED DIMENSIONS SHALL BE FOLLOWED.
2. ± 0.00 LEVEL CORRESPONDS TO PLUMB LEVEL (P.L.) OF BUILDING, WHICH IS 1050mm ABOVE FINISHED GROUND LEVEL (F.G.L.).
3. ALL RCC WORK SHALL BE OF M25 GRADE CONCRETE.
4. BRICKWORK SHALL BE WITH 100A BRICKS IN CEMENT MORTAR 1:6.

REV. DESCRIPTION DATE BY

---

**ARCHT. AND CONSULTANT**

**RAJESH ENGINEERING & CONSULTANCY SERVICES PVT. LTD.**  
 30 KOLIKAT ROAD, DOMBIVLI, PUNE-411002

**CLIENT & APPROVED**

**SENOR (ARCHT.)** SENOR (ARCHT.) SENOR (ARCHT.) SENOR (ARCHT.) SENOR (ARCHT.)

**SENOR (CIVIL)** SENOR (CIVIL) SENOR (CIVIL) SENOR (CIVIL) SENOR (CIVIL)

**SENOR (MECH)** SENOR (MECH) SENOR (MECH) SENOR (MECH) SENOR (MECH)

**SENOR (ELECTRICAL)** SENOR (ELECTRICAL) SENOR (ELECTRICAL) SENOR (ELECTRICAL) SENOR (ELECTRICAL)

**SENOR (SANITARY)** SENOR (SANITARY) SENOR (SANITARY) SENOR (SANITARY) SENOR (SANITARY)

**SENOR (STRUCTURAL)** SENOR (STRUCTURAL) SENOR (STRUCTURAL) SENOR (STRUCTURAL) SENOR (STRUCTURAL)

**SENOR (MATERIALS)** SENOR (MATERIALS) SENOR (MATERIALS) SENOR (MATERIALS) SENOR (MATERIALS)

**SENOR (PAINTS)** SENOR (PAINTS) SENOR (PAINTS) SENOR (PAINTS) SENOR (PAINTS)

**SENOR (FURNITURE)** SENOR (FURNITURE) SENOR (FURNITURE) SENOR (FURNITURE) SENOR (FURNITURE)

**SENOR (LANDSCAPE)** SENOR (LANDSCAPE) SENOR (LANDSCAPE) SENOR (LANDSCAPE) SENOR (LANDSCAPE)

**SENOR (VEGETATION)** SENOR (VEGETATION) SENOR (VEGETATION) SENOR (VEGETATION) SENOR (VEGETATION)

**SENOR (WATER SUPPLY)** SENOR (WATER SUPPLY) SENOR (WATER SUPPLY) SENOR (WATER SUPPLY) SENOR (WATER SUPPLY)

**SENOR (SEWERAGE)** SENOR (SEWERAGE) SENOR (SEWERAGE) SENOR (SEWERAGE) SENOR (SEWERAGE)

**SENOR (DRAINAGE)** SENOR (DRAINAGE) SENOR (DRAINAGE) SENOR (DRAINAGE) SENOR (DRAINAGE)

**SENOR (EARTHQUAKE)** SENOR (EARTHQUAKE) SENOR (EARTHQUAKE) SENOR (EARTHQUAKE) SENOR (EARTHQUAKE)

**SENOR (FIRE PROTECTION)** SENOR (FIRE PROTECTION) SENOR (FIRE PROTECTION) SENOR (FIRE PROTECTION) SENOR (FIRE PROTECTION)

**SENOR (ACoustics)** SENOR (ACoustics) SENOR (ACoustics) SENOR (ACoustics) SENOR (ACoustics)

**SENOR (LIGHTING)** SENOR (LIGHTING) SENOR (LIGHTING) SENOR (LIGHTING) SENOR (LIGHTING)

**SENOR (MECHANICAL)** SENOR (MECHANICAL) SENOR (MECHANICAL) SENOR (MECHANICAL) SENOR (MECHANICAL)

**SENOR (ELECTRICAL)** SENOR (ELECTRICAL) SENOR (ELECTRICAL) SENOR (ELECTRICAL) SENOR (ELECTRICAL)

**SENOR (TELECOMMUNICATIONS)** SENOR (TELECOMMUNICATIONS) SENOR (TELECOMMUNICATIONS) SENOR (TELECOMMUNICATIONS) SENOR (TELECOMMUNICATIONS)

**SENOR (ENVIRONMENTAL)** SENOR (ENVIRONMENTAL) SENOR (ENVIRONMENTAL) SENOR (ENVIRONMENTAL) SENOR (ENVIRONMENTAL)

**SENOR (ENERGY EFFICIENCY)** SENOR (ENERGY EFFICIENCY) SENOR (ENERGY EFFICIENCY) SENOR (ENERGY EFFICIENCY) SENOR (ENERGY EFFICIENCY)

**SENOR (SUSTAINABILITY)** SENOR (SUSTAINABILITY) SENOR (SUSTAINABILITY) SENOR (SUSTAINABILITY) SENOR (SUSTAINABILITY)

**SENOR (ACCESSIBILITY)** SENOR (ACCESSIBILITY) SENOR (ACCESSIBILITY) SENOR (ACCESSIBILITY) SENOR (ACCESSIBILITY)

**SENOR (CIVIL ENGINEERING)** SENOR (CIVIL ENGINEERING) SENOR (CIVIL ENGINEERING) SENOR (CIVIL ENGINEERING) SENOR (CIVIL ENGINEERING)

**SENOR (STRUCTURAL ENGINEERING)** SENOR (STRUCTURAL ENGINEERING) SENOR (STRUCTURAL ENGINEERING) SENOR (STRUCTURAL ENGINEERING) SENOR (STRUCTURAL ENGINEERING)

**SENOR (MECHANICAL ENGINEERING)** SENOR (MECHANICAL ENGINEERING) SENOR (MECHANICAL ENGINEERING) SENOR (MECHANICAL ENGINEERING) SENOR (MECHANICAL ENGINEERING)

**SENOR (ELECTRICAL ENGINEERING)** SENOR (ELECTRICAL ENGINEERING) SENOR (ELECTRICAL ENGINEERING) SENOR (ELECTRICAL ENGINEERING) SENOR (ELECTRICAL ENGINEERING)

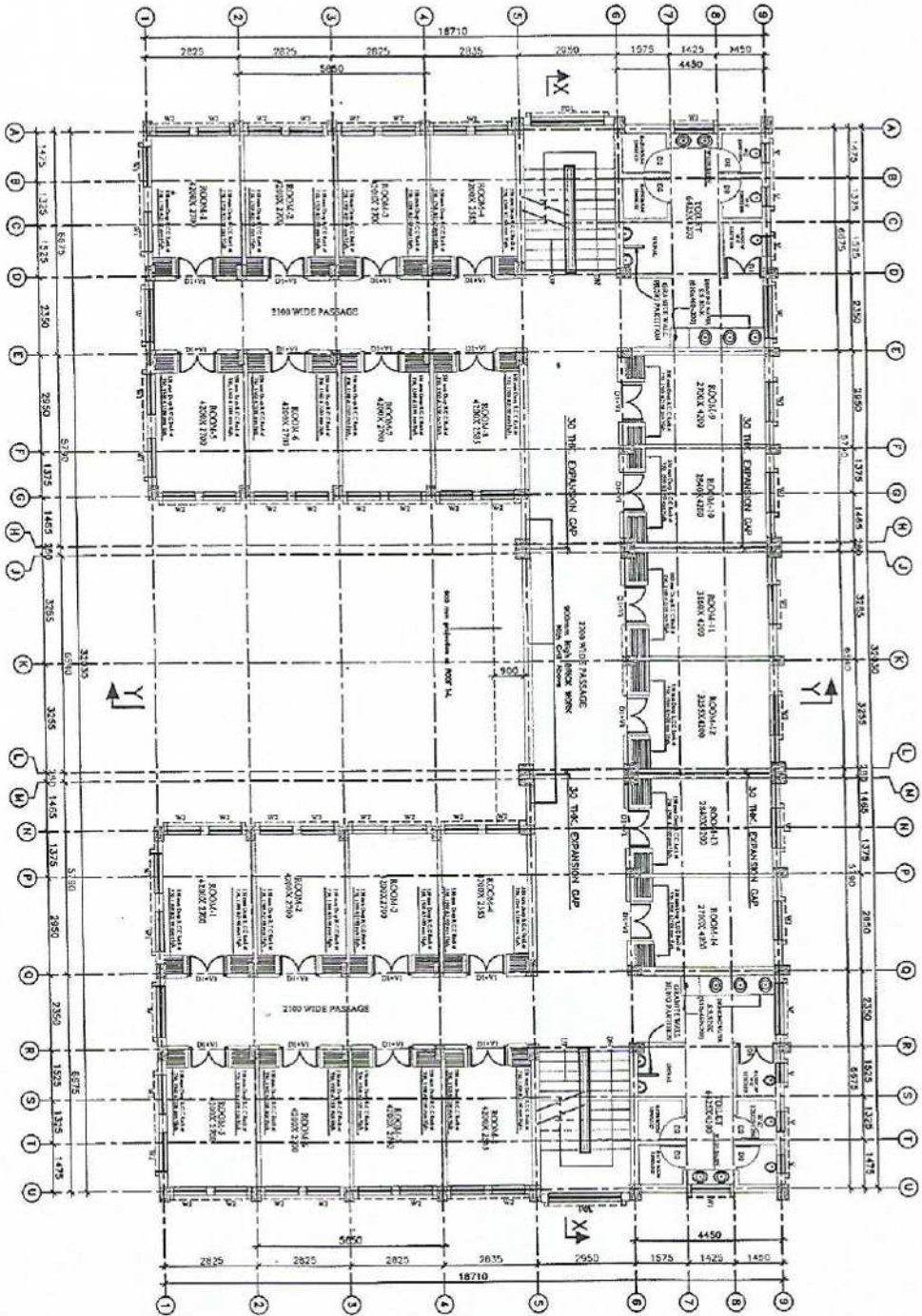
**SENOR (TELECOMMUNICATIONS ENGINEERING)** SENOR (TELECOMMUNICATIONS ENGINEERING) SENOR (TELECOMMUNICATIONS ENGINEERING) SENOR (TELECOMMUNICATIONS ENGINEERING) SENOR (TELECOMMUNICATIONS ENGINEERING)

**SENOR (ENVIRONMENTAL ENGINEERING)** SENOR (ENVIRONMENTAL ENGINEERING) SENOR (ENVIRONMENTAL ENGINEERING) SENOR (ENVIRONMENTAL ENGINEERING) SENOR (ENVIRONMENTAL ENGINEERING)

**SENOR (ENERGY EFFICIENCY ENGINEERING)** SENOR (ENERGY EFFICIENCY ENGINEERING) SENOR (ENERGY EFFICIENCY ENGINEERING) SENOR (ENERGY EFFICIENCY ENGINEERING) SENOR (ENERGY EFFICIENCY ENGINEERING)

**SENOR (SUSTAINABILITY ENGINEERING)** SENOR (SUSTAINABILITY ENGINEERING) SENOR (SUSTAINABILITY ENGINEERING) SENOR (SUSTAINABILITY ENGINEERING) SENOR (SUSTAINABILITY ENGINEERING)

**SENOR (ACCESSIBILITY ENGINEERING)** SENOR (ACCESSIBILITY ENGINEERING) SENOR (ACCESSIBILITY ENGINEERING) SENOR (ACCESSIBILITY ENGINEERING) SENOR (ACCESSIBILITY ENGINEERING)



SECOND FLOOR PLAN  
 AREA - 4810.00 SQM (GROSS) (4810.00)

SL.NO.	TYPE	WIDTH	HEIGHT	NO.	DESCRIPTION
1	D1	1500	2100	12	DOUBLE PANEL WOODEN DOOR
2	D2	1100	2100	12	SINGLE PANEL WOODEN DOOR
3	W1	1500	1500	4	STEEL FRAME GLAZED WINDOW
4	W4	1500	1500	16	STEEL FRAME GLAZED WINDOW
5	W2	1500	1500	22	STEEL FRAME GLAZED WINDOW
6	V1	600	600	5	STEEL GLAZED VENTILATION
7	V4	1500	300	22	STEEL GLAZED VENTILATION
8	V2	200	2100	2	GLAZED VENTILATION

*Drinking water provision done  
 11.7.12*

REV.	DESCRIPTION	DATE	BY

NOTES:-  
 1. ALL DIMENSIONS AND LEVELS ARE IN MM. & FIGURED DIMENSIONS SHALL BE FOLLOWED.  
 2. 40.00 LEVEL CORRESPONDS TO PLUMB LEVEL (F.L.) OF BUILDING, WHICH IS 100MM ABOVE FINISHED GROUND LEVEL (G.S.L.).  
 3. ALL ROOF WORK SHALL BE OF M25 GRADE CONCRETE.  
 4. BRICKWORK SHALL BE WITH 100M BRICKS IN CEMENT MORTAR 1:6.

**ARCHITECT**  
 A.P. Singh  
 11.7.12

**SENIOR ARCHT.**  
 B.S.E.D.C. PATNA  
 11.7.12

**PROJECT**  
 PROPOSED CONSTRUCTION OF NEW  
 BOYS HOSTEL FOR 100 STUDENTS  
 (DIST. P.T.E.C. G.T.E. PATNA)

**DEPT.**  
 BIHAR STATE EDUCATIONAL INFRASTRUCTURE  
 DEVELOPMENT CORPORATION LTD.  
 EDIHUSHA BHAWAN, SAHAPUR, PATNA

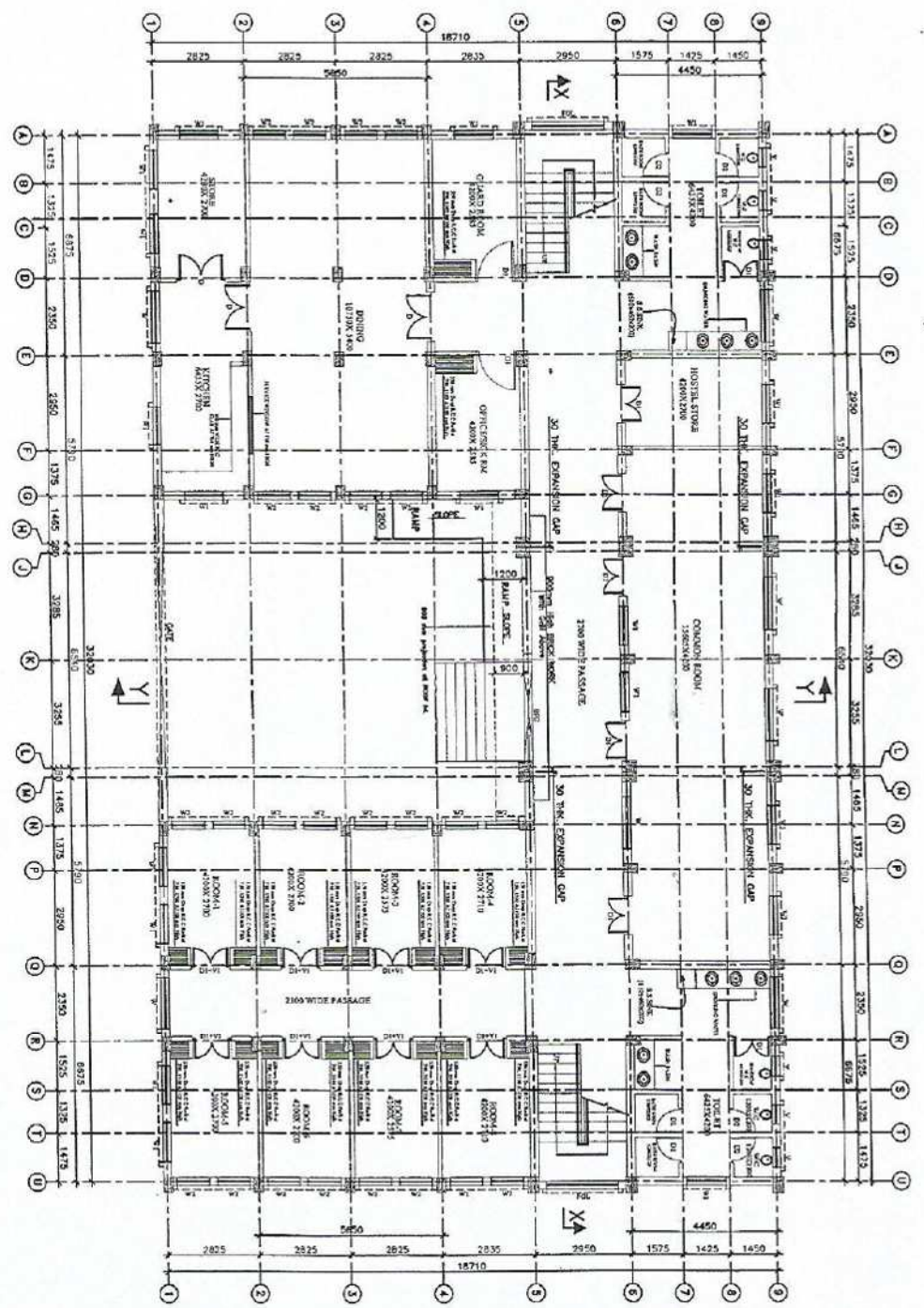
**ARCHT. AND CONSULTANT**  
 DANISH BISHOI & CONSULTANTS SERVICES PVT. LTD.  
 3001/1 OF PLOT NO. 40/1  
 COMPLEX, PHASE-1, SAHAPUR, PATNA

**DESIGN & APPROVAL**  
 S.L. DUBEY  
 S.A.  
 11.7.12

**SECOND FLOOR PLAN**

Scale: 1/75

Sheet 3 of 4



- NOTES:-
1. ALL DIMENSIONS AND LEVELS ARE IN MM. & RAISED DIMENSIONS SHALL BE FOLLOWED.
  2. 40.00 LEVEL CORRESPONDS TO FINISH LEVEL(F.F.L.) OF BUILDING, WHICH IS 100mm ABOVE FINISHED GROUND LEVEL(G.L.).

3. ALL ROOF WORK SHALL BE OF M25 GRADE CONCRETE.
4. BRICKWORK SHALL BE WITH 100A BRICKS IN CEMENT MORTAR 1:6.

S.L. NO.	TYPE	WIDTH	HEIGHT	NO.	DESCRIPTION
1	D	1500	2100	4	DOOR IN PANEL WINDOW DOOR
2	CI	1500	2100	5	DOOR IN PANEL WINDOW DOOR
3	CI	750	1800	12	SINGLE PANEL WINDOW DOOR
4	W	1500	1500	7	STEEL FRAME GLAZED WINDOW
5	W	1500	1500	15	STEEL FRAME GLAZED WINDOW
6	WV	1500	1500	24	STEEL FRAME GLAZED WINDOW
7	V	600	600	8	STEEL GLAZED VENTILATION
8	VI	1500	300	5	STEEL GLAZED VENTILATION
9	VI	2200	2000	2	GLAZED VENTILATION
10	VI	3000	2400	1	BRICK GULL CANE

*Drinking water provision to be made*

**BIHAR STATE EDUCATIONAL INFRASTRUCTURE DEVELOPMENT CORPORATION LTD.**  
SHEIKH BHAVAN, SAHUPUR, PATNA

**PROJECT:** PROPOSED CONSTRUCTION OF NEW CHRIS HOSTEL FOR 100 STUDENTS (DIET/TEC./CET/BITE)

**DEPT.:** BIHAR STATE EDUCATIONAL INFRASTRUCTURE DEVELOPMENT CORPORATION LTD., SHEIKH BHAVAN, SAHUPUR, PATNA

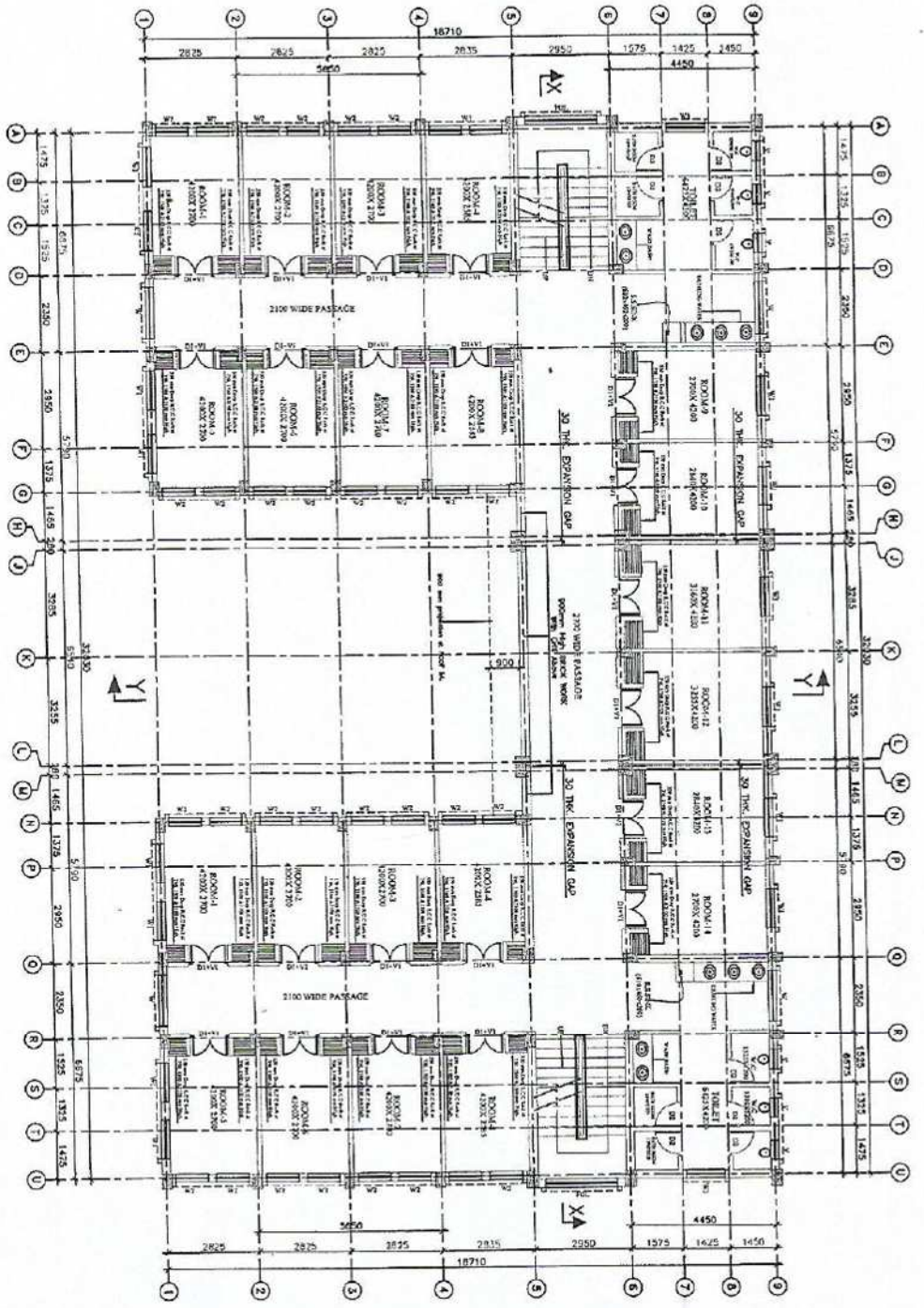
**ARCHT. AND CONSULTANT:** PUNJEE DESIGN & CONSULTANCY SERVICES PVT. LTD., 201/202A, SCHEME OFFICE PARK, NEAR ST. XAVIER SCHOOL, DEHRADUN, RAJCH-243002

**DESIGN & DRAWN BY:** S.K. SINGH

**SCALE:** 1:25

**GROUND FLOOR PLAN**

**REV. NO. / DATE / BY**



FIRST FLOOR PLAN  
AREA = 48207 sqm (5255.18 sqm)  
SCALE 1/75

REV.	DESCRIPTION	DATE	BY

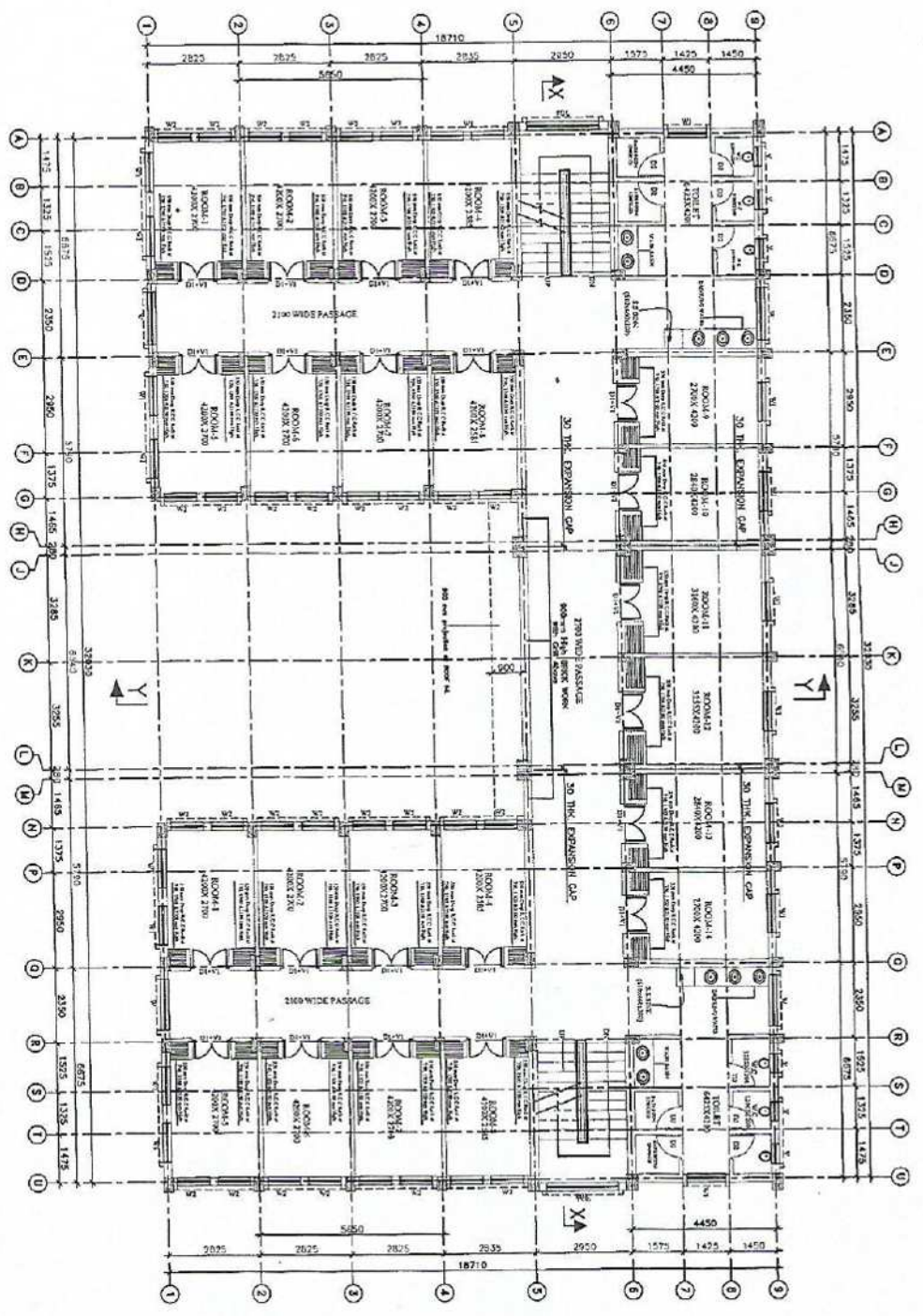
NOTES:-  
1. ALL DIMENSIONS AND LEVELS ARE IN mm. & FINISHED DIMENSIONS SHALL BE FOLLOWED.  
2. ±0.00 LEVEL CORRESPONDS TO PLAIN LEVEL (P.L.) OF BUILDING, WHICH IS 1050mm ABOVE FINISHED GROUND LEVEL (G.L.).

3. ALL RCC WORK SHALL BE OF M25 GRADE CONCRETE.  
4. BRICKWORK SHALL BE WITH 100A BRICKS IN CEMENT MORTAR 1:6.

S.NO.	TYPE	WIDTH	HIGHT	NO.	DESCRIPTION
1	DT	1200	2100	21	DOOR OF PANEL WOODEN DOOR
2	CD	750	2100	13	SHRIMP PANEL WOODEN DOOR
3	W	1600	1800	4	STEEL FRAME GLAZED WINDOW
4	WH	1200	1500	16	STEEL FRAME GLAZED WINDOW
5	W2	1200	1200	11	STEEL FRAME GLAZED WINDOW
6	V	600	600	22	STEEL GLAZED VENTILATION
7	VI	1200	300	22	STEEL GLAZED VENTILATION
8	VDL	2200	2100	3	GLAZED VENTILATION

*Drinking water problem done  
Painting done  
11-7-12*

<p>ARCHT. AND CONSULTANT</p> <p>RANJEE DESIGN &amp; CONSULTANCY SERVICES PVT. LTD. SOUTH OFFICE PANA, NEAR STAMBER SCHOOL, DORANDA, PIN-424002</p>		<p>PROJECT</p> <p>PROPOSED CONSTRUCTION OF NEW GIRLS HOSTEL FOR 100 STUDENTS (DHT, PTEC, CTE, BITE)</p>	
<p>DEPT.</p> <p>BHAR STATE EDUCATIONAL INFRASTRUCTURE DEVELOPMENT CORPORATION LTD., SHREYA BHAVAN, SAUBER, PANA</p>		<p>SE</p> <p>BSEDC, PANA</p>	
<p>ARCHT. AND CONSULTANT</p> <p>ANAND 11-7-12</p>		<p>CE</p> <p>BSEDC, PANA</p>	
<p>DESIGN BY</p> <p>SK</p>		<p>SCALE</p> <p>1/75</p>	
<p>DATE</p> <p>11-7-12</p>		<p>SHEET 2 OF 4</p>	



SECOND FLOOR PLAN  
Arch - 48000 (AS PER 17/5)  
(SCALE 1/75)

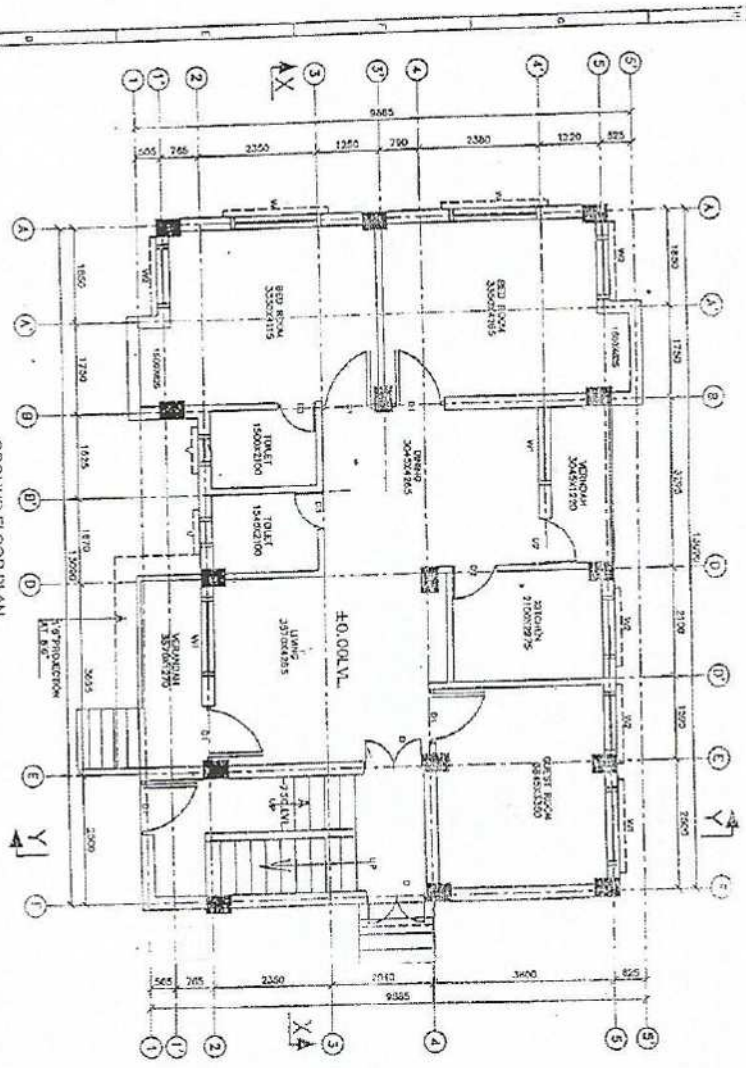
SL.NO	TYPE	WIDTH	HEIGHT	NO.	DESCRIPTION
1	DR	1200	2100	22	DOUBLE PANEL WOODEN DOOR
2	DR	1000	2100	12	SINGLE PANEL WOODEN DOOR
3	W	900	1800	4	STEEL FRAME GLAZED WINDOW
4	W	1200	1200	16	STEEL FRAME GLAZED WINDOW
5	W	900	1200	32	STEEL FRAME GLAZED WINDOW
6	V	800	600	3	STEEL GLAZED VENTILATION
7	V	1200	300	23	STEEL GLAZED VENTILATION
8	W	200	2000	2	GLAZED VENTILATION

*Handwritten note:*  
Handy water provision done.  
Cover of beds 11-7-18

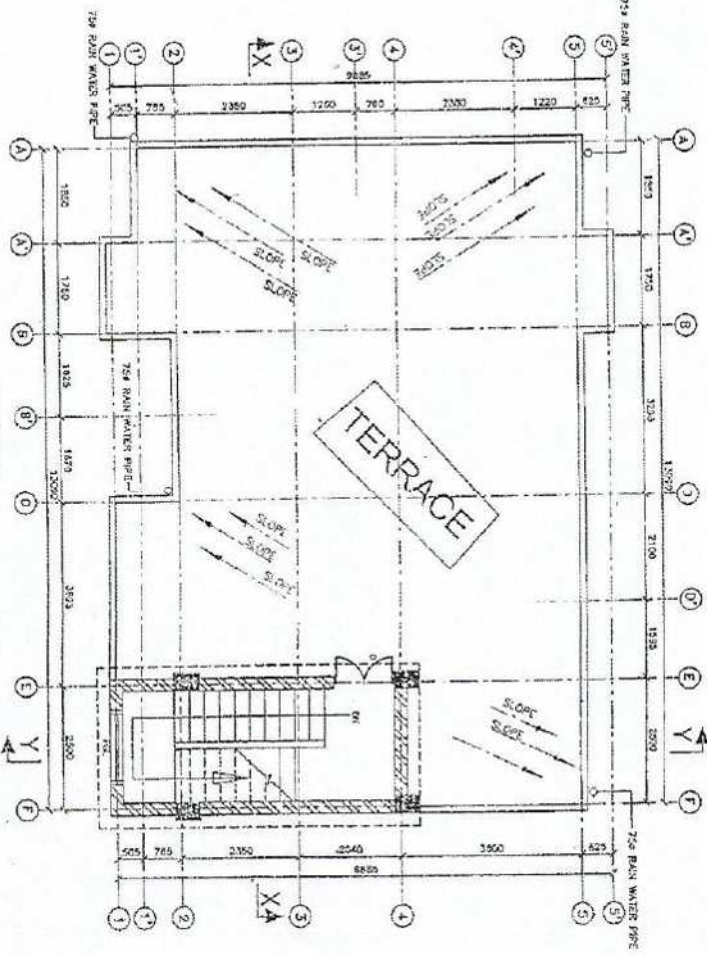
- NOTES:-
1. ALL DIMENSIONS AND LEVELS ARE IN mm. & FIGURED DIMENSIONS SHALL BE FOLLOWED.
  2. ±0.00 LEVEL CORRESPONDS TO FINISH LEVEL (P.L.) OF BUILDING, WHICH IS 1050mm ABOVE FINISHED GROUND LEVEL (G.L.).
  3. ALL RCC WORK SHALL BE OF M25 GRADE CONCRETE.
  4. BRICKWORK SHALL BE WITH 100A BRICKS IN CEMENT MORTAR 1:5.

<p align="center"><b>BIHAR STATE EDUCATIONAL INFRASTRUCTURE DEVELOPMENT CORPORATION LTD.</b> SHEKHA BHAVAN, SAMBHA, PATNA</p>			
<p>ARCHT. AND CONSULTANT</p> <p><b>R/S</b> RAMESH KUMAR &amp; COMPANY CONSULTANTS 10/10, GATE NO. 1, P.O. CHANDI, PATNA-800 002</p>	<p>DESIGN BY</p> <p>S.K. SINGH</p>	<p>SCALE</p> <p>1:75</p>	<p>DATE</p> <p>11-7-18</p>
<p>PROJECT</p> <p>PROPOSED CONSTRUCTION OF NEW GIRLS HOSTEL FOR 100 STUDENTS (DIET, P.TEC, CTE, IITE)</p>	<p>DEPT.</p> <p>BIHAR STATE EDUCATIONAL INFRASTRUCTURE DEVELOPMENT CORPORATION LTD., SHEKHA BHAVAN, SAMBHA, PATNA</p>	<p>SENIOR D/R/C</p> <p>SENIOR (ARCHT)</p> <p>SENIOR (PANA)</p>	<p>SENIOR (ARCHT)</p> <p>SENIOR (PANA)</p> <p>SENIOR (PANA)</p>
<p align="center"><b>SECOND FLOOR PLAN</b></p>			

REV.	DESCRIPTION	DATE	BY



GROUND FLOOR PLAN  
AREA: 123.53 SQM (1329.19 sqft)  
(SCALE: 1:50)



ROOF PLAN  
(SCALE: 1:50)

1	D	1000	2100	2	GLAZED WINDOW
2	D3	1000	2100	4	GLAZED WINDOW
3	D2	1000	2100	2	SINGLE PANEL WOODEN DOOR
4	D3	750	2100	2	SINGLE PANEL WOODEN DOOR
5	W	1800	1200	2	STEEL FRAME GLAZED WINDOW
6	V1	1500	1200	3	STEEL FRAME GLAZED WINDOW
7	V2	1200	1000	4	STEEL FRAME GLAZED WINDOW
8	V	800	800	2	CENTER HUNG STEEL FRAME GLAZED VENTILATOR
9	FOU	2100	1500	1	GLAZED VENTILATOR

BIHAR STATE EDUCATIONAL INFRASTRUCTURE DEVELOPMENT CORPORATION LT.  
CHENNAI BRANCH, MADHUR, KANNI

ARCHT. ENGINEER: ARCHA SREEJA  
STRUCTURAL ENGINEER: EPOSON RAJESH  
DRAWING: SURESH  
CHECK: C.E.

PROPOSED PRINCIPAL QUARTER FOR DEPT

PROJECT: BIHAR STATE EDUCATIONAL INFRASTRUCTURE DEVELOPMENT CORPORATION LTD.  
CHENNAI BRANCH, MADHUR, KANNI

ARCHT. ENG. CONSULTANT: MANE DESIGN & CONSULTANT SERVICES PVT. LTD.  
S. SURESH CHENNAI, KANNI, CHENNAI

पत्रांक - BSEIDC/DBG/2018/809

dt 05.12.18

प्रेषक - कार्यपालक अभियन्ता  
BSEIDC Ltd  
दरभंगा प्रमंडल

लेवा में,

श्री प्राचार्य

अध्यापक शिक्षा महाविद्यालय, समस्तीपुर

विषय:- संस्थान के नए भवन की पूर्णता के संबंध में।

प्रसंग - आपका पत्रांक 2142 dt 29.11.2018

महाशय ।

उपर्युक्त विषयक CTE समस्तीपुर  
के भवन का Approved Building Plan समर्पित  
की जा रही है।

साथ ही सूचित करना है कि  
CTE समस्तीपुर का भवन निर्माण कार्य  
Approved नक्शा एवं प्राक्कलन की विशिष्टियों  
के अनुसार पूर्ण है।

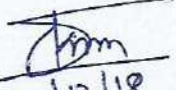
सादर सूचनाई समर्पित।

विश्वासभाजन

Anil Kr Singh  
05.12.18

Executive Engineer  
BSEIDC  
Darbhanga Division

Manoj Kumar.  
5/12/18.  
Junior Engineer  
B.S.E.I.D.C

  
5/12/18  
A.E., BSEIDC  
Divi-Darbhanga

अनुमोदक - यद्योक्त

**BUILDING COMPLETION CERTIFICATE**

I CTE SAMASTIPUR hereby certify that that the institution namely

situated at

\_\_\_\_\_ have personally inspected the land and building mentioned in the statement below and the same is based on the registered documents, data measurements and specifications found in the site.

1.	Name of the society/trust	Govt. Institution.
2.	Name of the institution	C.T.E. Samastipur, Bihar
3.	A certificate from the competent authority to the effect that the society sponsoring the instruction has transferred and vest the title of the land and building in the name of the institution as per clause 8 (7) (v) of the NCTE Regulations, 2009  <b>Note:</b> Clause 8(7) (iv) of the NCTE Regulation, 2009 provides that "the society sponsoring the institution shall be required to transfer and vest the title of the land and building in the name of the institution within a period for s six months from the date of issue of formal recognition order under sub-regulation (11) of Regulation 7. However, in case, the society fails to do so due to local laws or rules or bye-laws, it shall intimate in writing with documentary evidence, of its inability to do so."	A copy of the certificate is required to be enclosed by all recognized institutions within a period of six months from the date of issue of formal recognition order under sub-regulation (11) of Regulation 7 of the NCTE Regulation, 2009.  Copy enclosed: Yes/No
4.	Location with khata/khasra/ Street No./Ward No., Name of the Place, Corporation / Municipality / Panchayat.	Amirganj Dharampur Samastipur Plot No - 1556, 1558, 1662 ETC
5.	Date of Registration of Land	11.6.1967
6.	Registered in the office of Sub-Registrar with address	Darbhanga
7.	The location of the land of the institution is in a single plot or different plot	Different Plot
8.	If the location of the land of the institution is not in a single plot the distance of different plots be mentioned.	
9.	Type of ownership of land	Govt.

Cont...P/2



10.	Building plan approved by (address of Corporation / Municipality / Panchayat/any other Govt. Agency)	BSEIDC, PATNA.		
11.	Year of construction	2017-18.		
12.	Purpose for which the building is being used / proposed to be used	B.ED and M.ED.		
13.	Electricity connection No.	SMU10652		
	Telephone connection No.			
14.	Total land area of the institution	09 एअर 09 बिअर		
	Total built up area of the institution	2553.55 m <sup>2</sup> (new).		
15.	Total land area earmarked for teacher training programme (Name of the course to be mentioned)			
	Total built up area earmarked for teacher training programme (Name of the course to be mentioned)			
16.	Details of construction of building (Roofing – pl. mention RCC / Asbestos / Tiled / any other pl. Specify)		Area	Roofing
		Ground Floor	Sq.ft.	2553.55m <sup>2</sup>
		First Floor	Sq.ft.	2430.02m <sup>2</sup>
		Second Floor	Sq.ft.	996 m <sup>2</sup>
		Third Floor	Sq.ft.	
17.	Details of Land Use Certificate for Educational purposes from the concerned Govt. authorities/any other govt. local body details thereof.	Date of issue of Certificate		
		Issued by :		

On verification of the above on site, I hereby certify that:-

- (i) The land & building of the institution is exclusively meant for running teacher training programme. The institution campus, building, furniture etc. is barrier free. There is no temporary structure, asbestos/tin sheet sheds available in the building. Safeguard against fire hazard has been provided in all parts of the building
- (ii) The building of the institution is constructed keeping in view the provisions and bye-laws of the building construction as per the Bureau of Indian Standards and the same is structural safe and secure to run the teacher training course.
- (iii) The construction of the building is completed in all respects and the building is structurally sound to be used for Educational purposes and having the load bearing capacity as per the latest Indian Standards.
- (iv) This is to certify that the building has been completed in all respects as per the plan submitted to NCTE.

Manoj Kumar  
5/12/18.  
Signature with Seal  
B.S.E.I.D.

//3//

Name of the approved/authorized Engineer/ Architect	Pankaj sinha
Designation	Architect
Office Address	BSEIDC PATNA

Certified by the competent govt. authority/local govt. body

Signature with Seal	
Name of the competent authority	PARMILA KUMARI
Designation	PRINCIPAL
Office Address	C.T.E. SAMASTIPUR

Countersigned by the authorized representative of the management of the institution.

Signature with Seal  
5.12.18

Name of the authorized representative of the society/trust running the teacher training programme.	
Designation	PRINCIPAL
Name of the society/trust	Govt.
Office Address	CTE, SAMASTIPUR.